



U TECH Pipe Section MT 4.0

Marine & Offshore Insulation

U TECH Pipe Section MT 4.0

ULTIMATE mineral wool provides a unique high-performance profile: it combines safety, comfort and ease of handling.



Excellent Thermal insulation

Premium thermal and acoustic insulation for surface temperatures up to 660°C



Light weight

Light weight solutions with up to 50% weight savings compared to traditional pipe sections



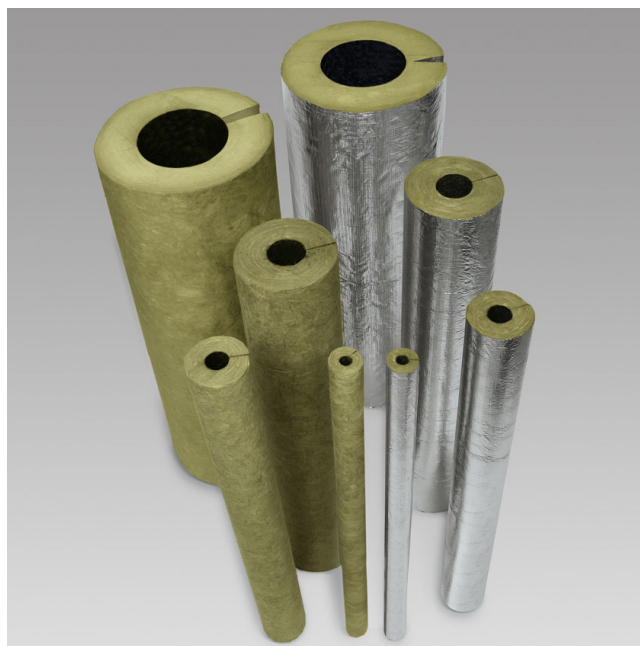
Fast Installation

Light weight and length of 1.2 m allows fast, efficient and easy installation



Effective Fire Protection

Effective fire protection as classified non-combustible Euroclass A1_L and according IMO





U TECH Pipe Section MT 4.0

Marine & Offshore Insulation

Characteristic	Symbol	Unit	Quantities and measured values							Standard
Application fields	-	-	Product for use in technical applications, for simple and timesaving insulation of pipes of all kinds especially for heating and industrial water lines, distant heating systems as well as pipe lines in construction of power plants and chemical plants.							-
Material	-	-	Mineral wool with quality mark RAL by the Gütegemeinschaft Mineralwolle e. V., unrisky regarding health according to German decree on dangerous substances, decree on prohibition of chemicals and to guideline EU 97/69 Nota Q.							-
Thermal conductivities	T	[°C]	40	50	100	150	200	250	300	EN 8497
	$\lambda_{N,R}$	[W/(m•K)]	0.035	0.037	0.043	0.052	0.062	0.074	0.089	
Thermal behaviour	-	-	Maximum service temperature: Tmax = 660°C under 500Pa From 150 °C on the binder begins to volatilise							EN 14707
Behaviour in fire	-	-	Non combustible Euroclass A1 _L Non-combustible according to IMO-Resolution MSC.61(67) Homologated for shipbuilding EC Type Examine Certificate Nr.114.498 Melting point ≥ 1000°C.							EN 13501 IMO DIN 4102-17
Specific thermal capacity	c	[kJ/(kg•K)]	~ 1							-
Chemical behaviour	-	-	AS-Quality Hydrophobic Sulphide-free Free of corrosion supportive material Silicone-free on request							AGI Q 132
Quality management	-	-	Insulating material for HVAC and industrial systems according to AGI Q 132 CE-marked according to EN 14303. Quality control according to VDI 2055 Isover has been certified according EN ISO 9001							AGI Q 132 VDI 2055 EN ISO 9001
Miscellaneous	-	-	Insulating material identification number: 10.04.03.66.99 EnEV Certificate, registration number 6V099 for both, with and without facing CE-marking designation code: MW-EN14303-T8-ST(+660-WS1-CL10 (outside pipe diameter ≤ 150 mm) MW-EN14303-T9-ST(+660-WS1-CL10 (outside pipe diameter > 150 mm)							-

Delivery form: Standard dimensions / packaging information

Thickness (mm)	Outside pipe diameter in mm																				
	15	18	22	28	35	42	45	48	54	57	60	64	70	76	89	102	108	114	133	140	159
20	57.6	50.4	43.2	36.0	30.0	24.0	19.2	19.2	28.8	28.8	27.6	24.0									
30	30.0	28.8	24.0	19.2	19.2	14.4	24.0	24.0	19.2	19.2	19.2	18.0	14.4	14.4	10.8	9.6	9.6	7.2	6.0	6.0	4.8
40			14.4	19.2	10.8	10.8	18.0	9.6	10.8	10.8	10.8	10.8	10.8	10.8	9.6	7.2	7.2	6.0	4.8	4.8	4.8
50					10.8	10.8	10.8	10.8	10.8	10.8	9.6	9.6	9.6	4.8	4.8	6.0	6.0	4.8	4.8	3.6	3.6
60									4.8	4.8	4.8	4.8	4.8	6.0	4.8	4.8	4.8	4.8	3.6	1.2	1.2
70												4.8	4.8	4.8	4.8	3.6	3.6	3.6	1.2	1.2	1.2
80														4.8	3.6	1.2	1.2	1.2	1.2	1.2	1.2
100															1.2	1.2	1.2	1.2	1.2	1.2	1.2
120																					1.2

Pipe section with slit on one side, length 1200 mm. Further dimensions on inquiry.
The information shows the linear meters per packaging unit, e. g.: 4,8 = 4 pipe sections per packaging unit.

www.isover-technical-insulation.com

The technical information corresponds to our present state of knowledge and experience at the date of printing (see imprint). But no legal guarantee can be given, unless it has been explicitly agreed. The state of experience and knowledge is developing continuously. Please see to it that you always use the latest edition of this information. The described product applications do not take special circumstances in consideration. Please verify whether our products are appropriate for the concrete application. For further information please contact our Isover sales offices. We deliver only according to our terms of trade and terms of delivery.

ISOVER
SAINT-GOBAIN